



**Kawasaki Mule Pro-FX/FXT**  
**Plow Mount Kit p/n: 1KAPFXPMK**  
 for use with the following kits:  
 p/n: 1UTVP (fully assembled plow)  
 p/n: 1UTVP-1 (unassembled plow)  
 p/n: 1UTVPW (unassembled winch lift plow)



**Heavy Duty Springs (Kawasaki p/n: 99994-0514)**  
**are required for the plow installation.**

Approximate Installation Time *
Experienced Dealer Technician – 45 min.
Average Dealer Technician – 45 min.
Do-It-Yourself – 45 min.

Approximate Product Specifications
Weight: 33 lbs.

(\*=Not including accessories)

The contents of this envelope are the property of the owner. Leave with the owner when installation is complete.

## SAFETY INFORMATION:

**WARNING:** Cabs, blades, and general accessories add additional weight to the base vehicle. Deduct the accessory's total weight from the vehicle's rated capacity including driver and passenger. Never operate the vehicle outside of its rated weight capacity.

**WARNING: Serious injury or death:**

- Never stand or ride on the plow assembly.
- Never operate the plow near pets or other people.
- Never leave the vehicle running unattended with plow attached.
- Never plow or carry plow at high speeds.
- Never clean or perform maintenance with plow raised.
- Never clean or service with plow in tripped condition.
- Never dislodge an obstruction with any part of the body.
- Warning - This attachment affects the handling performance.
- Warning - Before starting installation park RTV in a flat area, ensure parking brake is engaged, and engine is turned off.

### HELPFUL REMINDERS:

- A. Check carton contents prior to beginning installation.
- B. Work in an organized area large enough to fit vehicle and plow.
- C. Have the required tools ready to speed up the installation time.
- D. Have a helper available to help move heavy parts and assemblies.

### MAINTENANCE NOTES:

- **Check and tighten all fasteners in the plow assembly and vehicle mounting after initial use and every 5 hours of use thereafter.**
- **After every 10 hours of use, lubricate all pivot bolts, pins, snap lock latches, and any other moving parts in the plow assembly with all-season grease.**

#### Tools Required:

Set of standard and metric sockets

Set of standard and metric open end wrenches

One 3/8" Drive Ratchet

Pliers

File or Burr Removal Device

Drill

13/32" and 1" Drill Bit

# INSTALLATION INSTRUCTIONS

## Plow Mount Installation:

1. Park the vehicle on level ground, set the parking brake and turn off the ignition switch.
2. Mount installation is to be done with either the assistance of a jack, or by more than one person to be installed safely.

**Caution: Serious injury or death. Never work under a vehicle supported only by a jack. Always use properly rated and positioned jack stands.**

3. Drill the four pilot holes in the front bumper to 13/32" where noted in figs 3.1 and 3.2.

**Note:** Burr created by drilling holes, this will cause spacer to stick out past tube and bracket. This burr will be compressed by spacer upon tightening hardware.

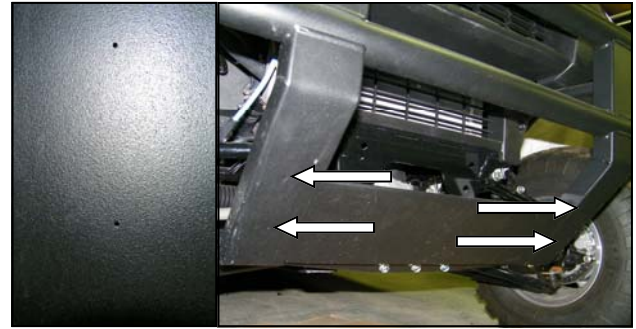


Fig. 3.1

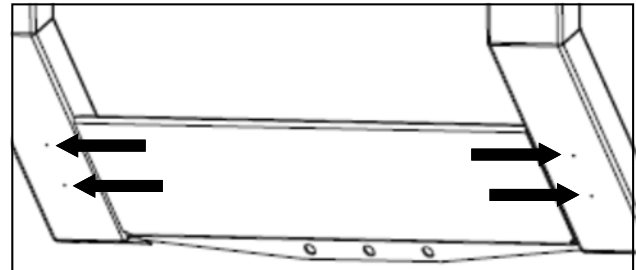


Fig. 3.2

4. Lift mount up to the skid plate beneath the front differential and line up slots on mount with holes on skid plate.
5. Feed 3/8"-16 x 1" hex bolts and 3/8" ID x 1-1/4" OD washer through holes, and attach with 3/8"-16 Nyloc nuts and 3/8"ID x 1-1/4" OD Washers as shown in fig. 5. Do not completely tighten at this time.

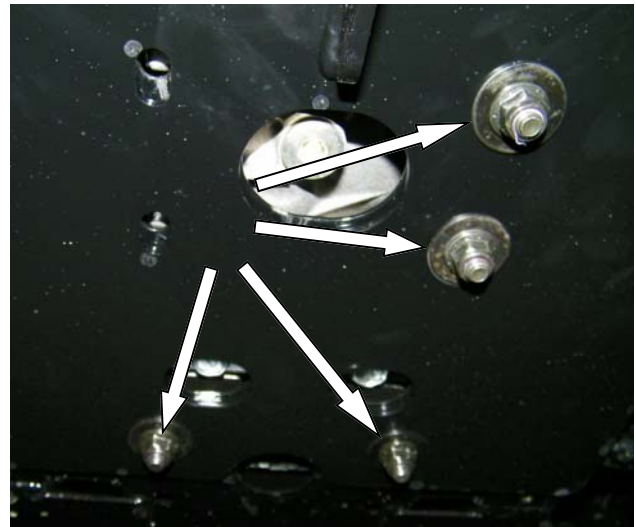


Fig. 5

# INSTALLATION INSTRUCTIONS

6. Make sure the slots in the front of the mount line up with the holes drilled into front bumper. Feed 3/8"-16 x 2-3/4" hex bolts through 3/8" ID x 1-1/4" OD washer through the slots in the mount and holes in the front bumper.
7. Slide 9/16" OD sleeve spacer over the hex bolt from holes in the back of the bumper being cautious not to drop spacer. Place mount support bracket and attach with 3/8"-16 Nyloc nuts and 3/8" ID x 1-1/4" OD washer as shown in fig. 7. Fully tighten hardware at this time.

**NOTE: If installing the Winch Lift Plow, disregard all that follows and follow Winch Plow directions to complete installation. Steps 8 through 16 for vehicle side wire harness included in plow kit.**

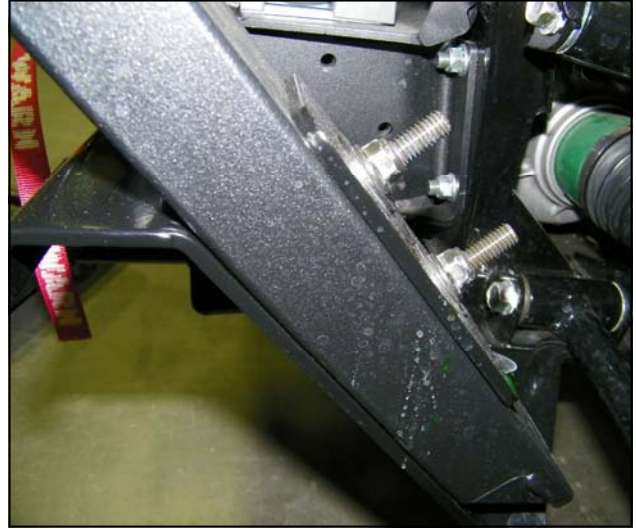


Fig. 7

8. Feed the hydraulic wire harness through the connector bracket and attach 7 pin connector (only connector shown) to bracket using 10-32 x 3/4" pan head screws and 10-32 Nyloc nuts as shown in fig. 8.

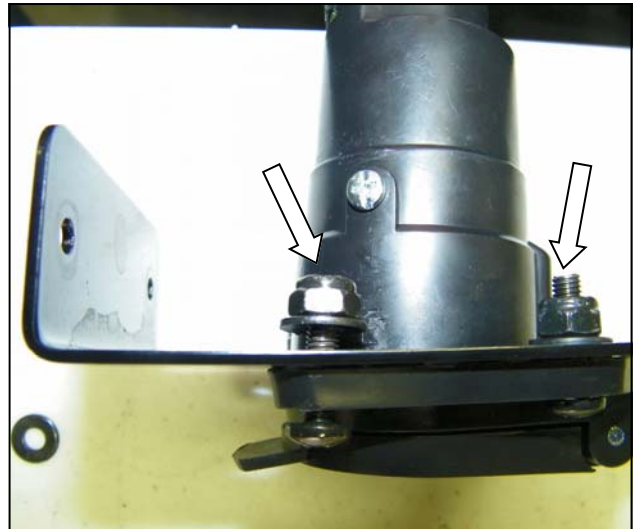


Fig. 8

9. Attach the 7 pin connector bracket to the plow mount through the holes on the right side mount with 10-32 x 3/4" pan head screw and 10-32 Nyloc nuts as shown in fig. 9.



Fig. 9



# INSTALLATION INSTRUCTIONS

## Wiring:

1. Remove skid panels from beneath vehicle if present.
2. Make sure 7 pin connector is attached to the plow mount before going further.
3. Feed 9 pin Controller plug front wire harness WHHLA02 up into forward compartment through the gap in plastic firewall just behind the front spring between the frame and vehicle's wire harness as shown in figure 3.

**Note:** If the Kawasaki factory accessory kit (P/N KAF080-042) is installed, or you are unable to feed the 9 pin connector past firewall, follow step 4, otherwise proceed directly to step 5.

4. Drill 1" diameter hole in plastic above passenger side front wheel marked in the location marked in figure 4. Slide grommet 9GR11 over the 9 pin connector on the main harness and attach into hole to better seal it. Feed 9 pin connector through hole and across the driver side of cab being sure to avoid radiator cover.

5. Route the 10 Ga. Black and Red ring terminal wires, the 16 Ga. Brown ring terminal and 16 Ga. Black male bullet connector under the vehicle along the frame following the manufacturer wire harnesses to the battery compartment as shown in figure 5.



Fig. 3

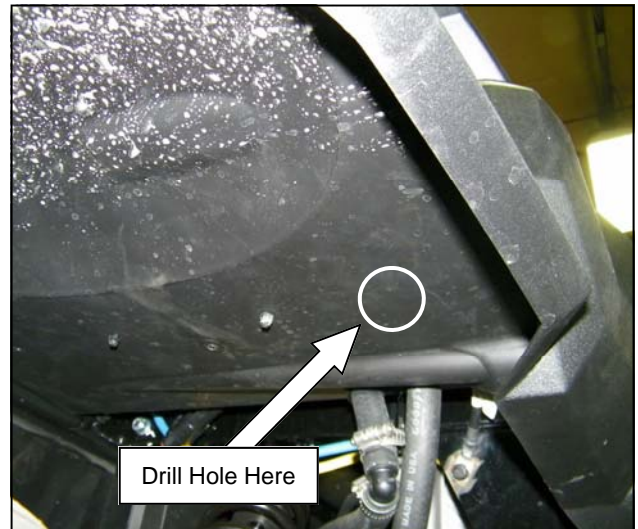


Fig. 4

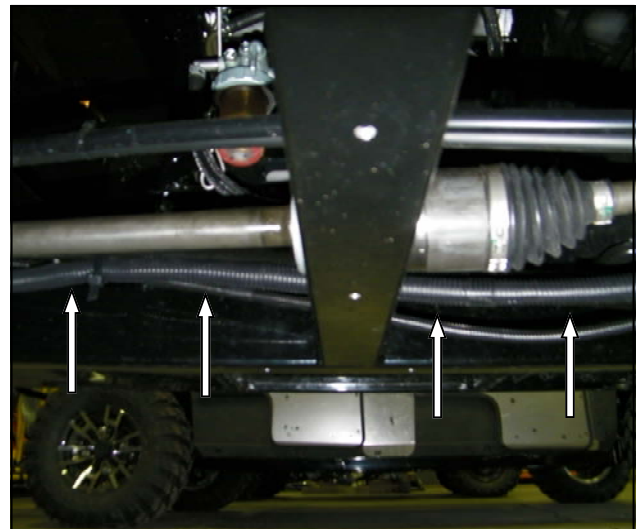


Fig. 5

# INSTALLATION INSTRUCTIONS

- Position solenoid near the battery, see figure 6. Remove rubber plug from frame of vehicle. Use this hole for mounting solenoid. Attach 10 Ga. Red wire from battery wire harness to R2 post on the solenoid and the other end to the positive (+) terminal on the battery. Attach 10 Ga. Black wire from same harness to solenoid with 1/4"-20 x 1" long hex head cap screw and fasten other end to the negative (-) terminal on the battery as shown in figure 6.

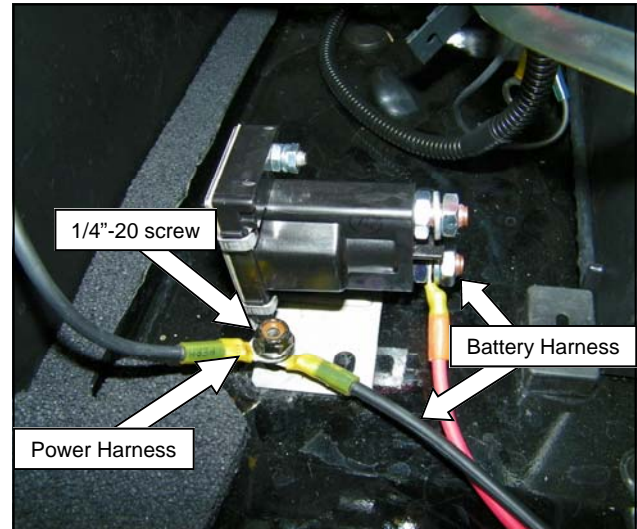


Fig. 6

- Attach 10 Ga. Black ground wire to the 1/4"-20 x 1" long hex head cap screw used to attach 10 Ga. Black wire from battery harness. Attach solenoid to vehicle frame by passing hex head screw through the hole unplugged in step 5 and secure with 1/4"-20 hex nut. As shown in figure 7.

**Important note:** The 10 Ga. Black ground wire must have good electrical contact with the vehicle chassis

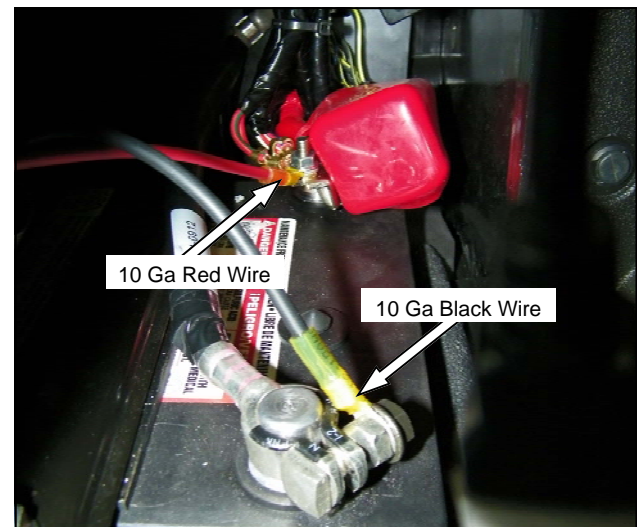


Fig. 7

- Route the 10 Ga. Red wire from wire harness WHHLA03 to the opposite post of the solenoid from the harness attached to the battery. As shown in figure 8.
- Attach ring terminal end of the 16 Ga. Brown wire onto the smaller stud at the base of the solenoid and tighten the nut supplied. Also shown in figure 8.

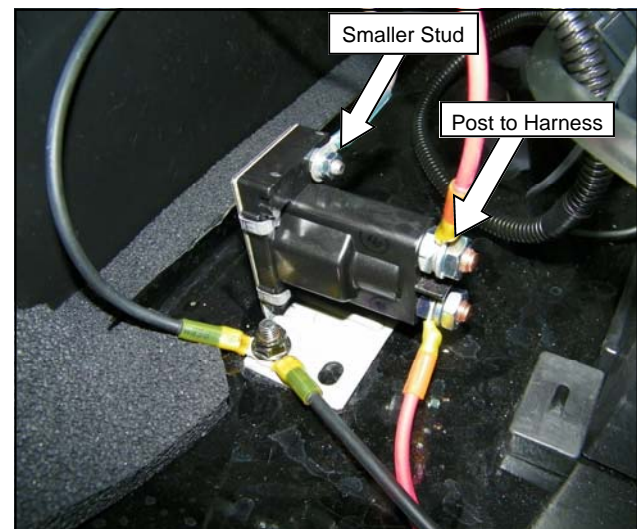


Fig. 8

# INSTALLATION INSTRUCTIONS

10. Connect male bullet attached to either female on end extension wire harness WH-00016. Route harness along vehicle frame towards accessory harness near right rear tail light of vehicle and attach to bullet on brown/red wire and secure as shown in figure 10.
11. Full wiring diagram given in figure 11.
12. Check route of wire harnesses to be sure it is away from heat sources and moving parts and secure with cable ties. Reattach skid panels at this time.

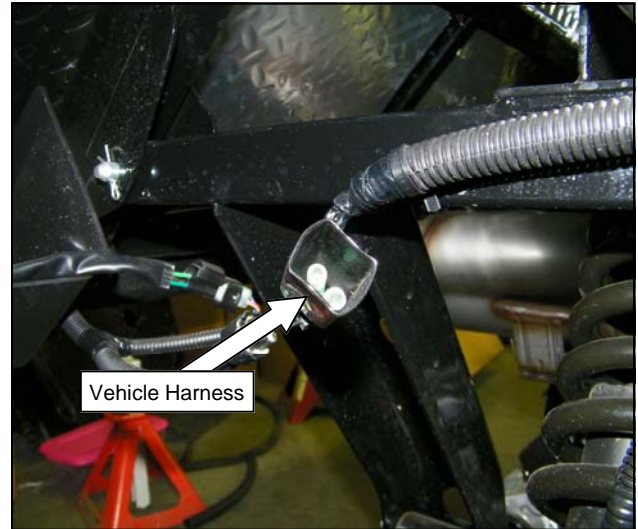


Fig. 10

13. Route the 9 pin connector under black electric panel towards driver side of cab.
14. Feed 9 pin connector on plow controller up under dash from left side of steering wheel just under the e-brake as shown in figure 14.
15. Then connect Controller to Power Harness, and switch off controller until you wish to use the plow.
16. When using the plow, the power switch is on top of controller.

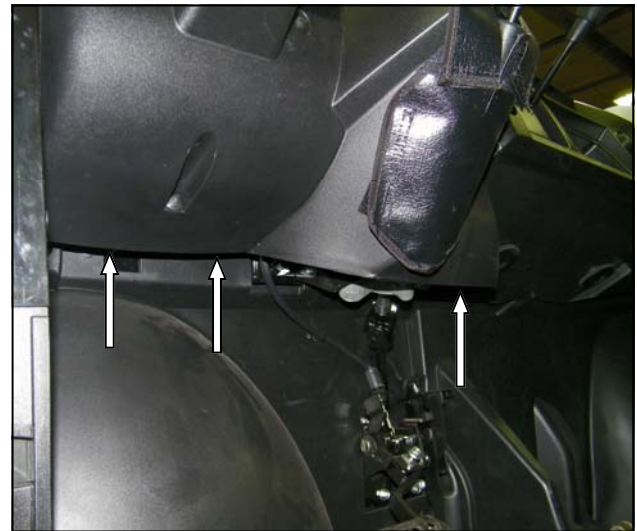


Fig. 14

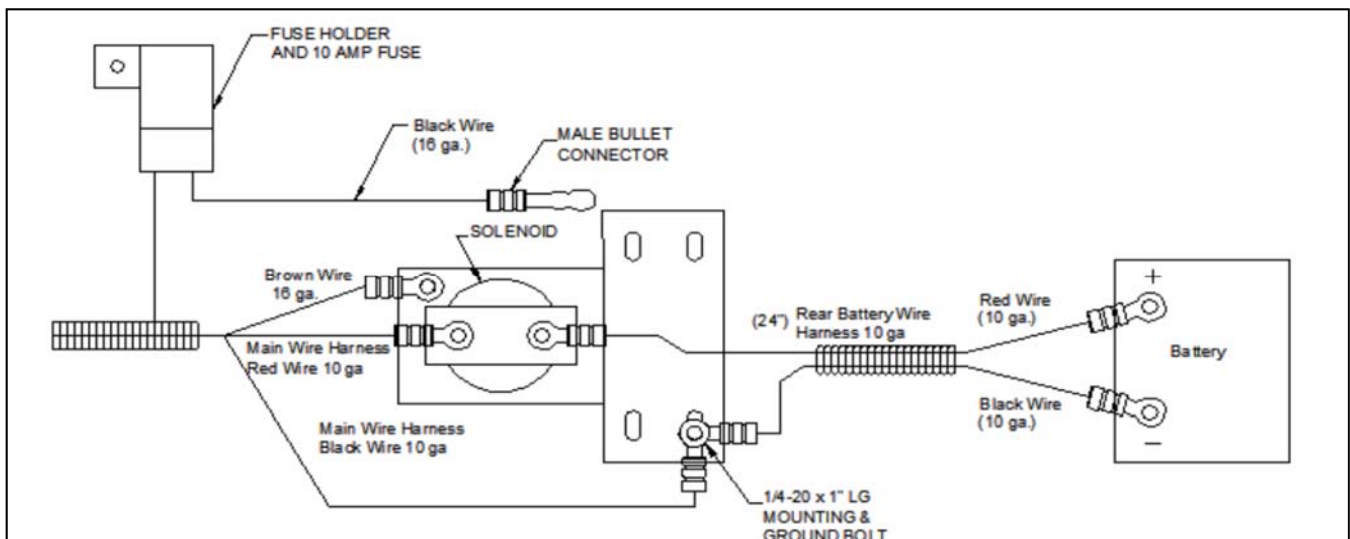
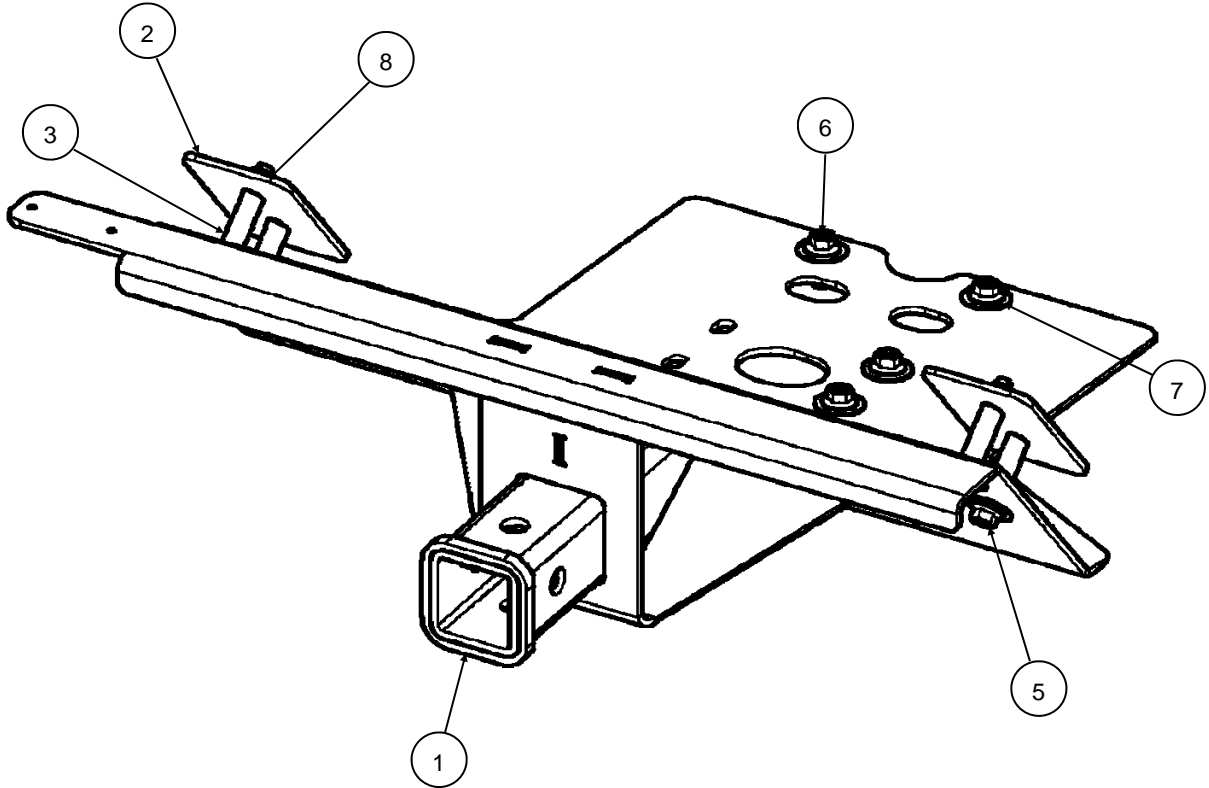


Fig. 11



# Kawasaki Mule Pro-FX/FXT

## Plow Mount Kit



ITEM NO.	PART NUMBER	DESCRIPTION	QTY.
1	8SV-WA-00049	WELDMENT MULE PRO FX/FXT PLOW MOUNT	1
2	8SV-HWB-00022	SUPPORT BRACKET	2
3		TUBE SPACER	4
4	9SV-WH-00016	ACCESORY WIRE HARNESS (NOT SHOWN)	1

### HARDWARE INCLUDED IN 8SV-HWK-00029

ITEM NO.	PART NUMBER	DESCRIPTION	QTY.
5	70-05-0303	3/8-16 X 2 3/4" HEX FLANGE BOLT GR 8 HB	4
6	70-05-0225	3/8-16 X 1" HEX FLANGE BOLT GR 8 HB	4
7	71-02-0104	3/8 X 1 1/4" FLAT WASHER HB	16
8	72-21-0086	3/8-16 HEX FLANGE LOCKNUT HB	8
NS	70-31-0233	#10-32 x 3/4" PAN-HEAD MACHINE SCREW HB	2
NS	71-02-0005	#10 X 3/4" FLAT WASHER HB	2
NS	72-21-0059	#10-32 HEX FLANGE LOCKNUT HB	2
NS	70-05-0210	1/4-20 X 3/4" HEX FLANGE BOLT GR 8 HB	1
NS	72-21-0036	1/4-20 HEX FLANGE LOCKNUT HB	1
NS	71-31-0004	5/16 X .69" NYLON SEALING WASHER BLACK	1
NS	9GR11	3/4" ID X 1 1/4" OD RUBBER GROMMET	1

NS = not shown