



John Deere Gator

Plow Mount Kit p/n: 1JDUTPMK

for use with the following kits:

p/n: 1UTVP (fully assembled plow)

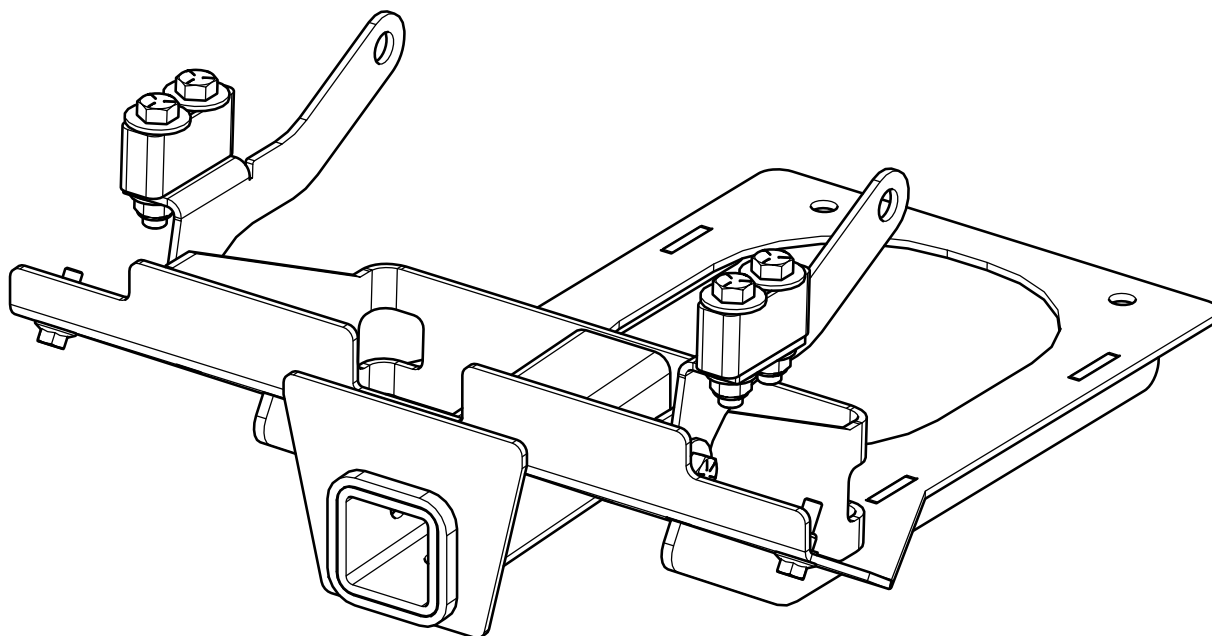
p/n: 1UTVP-1 (unassembled plow)

p/n: 1UTVPW (unassembled winch lift plow)

(fits model years 2011 and newer HPX/XUV)
(also fits HPX 615 and HPX 815)

Note: Front Heavy Duty Springs or Heavy Duty Spring Damper Assembly are required if plow is installed.

Approximate Installation Time: 45 Minutes



WARNING

Do not attempt to install or operate this plow until you read and understand all warnings and instructions in this manual or on the plow. Failure to read all warnings and instructions could lead to serious injury or death.



NOTICE

Curtis Cabs, blades and general accessories add additional weight to the base vehicle. All Curtis accessory weights are listed in product brochures. Deduct the accessory's total weight from the vehicle's rated capacity and never exceed the vehicle's rated capacity including driver and passenger.

SAFETY INFORMATION:

⚠ WARNING: Cabs, blades, and general accessories add additional weight to the base vehicle. Deduct the accessory's total weight from the vehicle's rated capacity including driver and passenger. Never operate the vehicle outside of its rated weight capacity.

⚠ WARNING: Serious injury or death:

- Never stand or ride on the plow assembly.
- Never operate the plow near pets or other people.
- Never leave the vehicle running unattended with plow attached.
- Never plow or carry plow at high speeds.
- Never clean or perform maintenance with plow raised.
- Never clean or service with plow in tripped condition.
- Never dislodge an obstruction with any part of the body.
- Warning - This attachment affects the handling performance.
- Warning - Before starting installation park RTV in a flat area, ensure parking brake is engaged, and engine is turned off.

HELPFUL REMINDERS:

- A. Check carton contents prior to beginning installation.
- B. Work in an organized area large enough to fit vehicle and plow.
- C. Have the required tools ready to speed up the installation time.
- D. Have a helper available to help move heavy parts and assemblies.

MAINTENANCE NOTES:

- **Check and tighten all fasteners in the plow assembly and vehicle mounting after initial use and every 5 hours of use thereafter.**
- **After every 10 hours of use, lubricate all pivot bolts, pins, snap lock latches, and any other moving parts in the plow assembly with all-season grease.**

Tools Required:

Set of standard and metric sockets
Set of standard and metric open end wrenches
One 3/8" Drive Ratchet
Pliers
File or Burr Removal Device
Torque Wrench
Drill and 9/32" bit
Dielectric Grease

1. PRELIMINARY:

If using a Utility Vehicle Plow Winch Lift (p/n IUTVPW), proceed to step 2.

- 1.1 **Warning:** Disconnect the battery. Disconnect the negative battery terminal first then the positive terminal second.

2. MOUNTING FRAME:

- 2.1 Remove the (4) existing bolts that attach the Front Skid Plate to the Bumper and remove the (2) existing bolts that attach the bottom skid plate to Frame Assembly per figures 2.1 and 2.2. and remove the Front Skid Plate and set aside (see Fig 2.3). Also remove the screws holding the Bumper Cover to the Bumper frame so that it is loose.
- 2.2 Attach right and left hand Mount Braces to Mount Assembly. The Mount Brace is to be placed on the outside surface of the Back Strap on the Mount Assembly with the bent ears pointing outward using the following hardware per Mount Brace: one 1/2-13 x 1 1/2" long Hex Bolt, one 1/2" x 1.37" O.D. washer (for under the bolt head), and one nut. Snug up but do not tighten. Note: see page 6 for orientation and to see the outside surfaces referred to for mounting. Also, keep the braces in the "up" position before lifting into place.
- 2.3 Align holes in Front of Mounting Bracket Assembly with holes in the front of the skid plate and bumper. Using 3/8-16 x 1 1/4" long Hex Bolt and Nut attach Mounting Bracket Assembly leaving finger tight.
- 2.4 Align holes in back of Mounting Bracket Assembly with the holes in the back of the skid plate and cross member. Using existing bolts, attach Mounting Bracket Assembly to bottom of skid plate and rear cross member finger tight.
- 2.5 Then align the holes in the middle of the Mounting Bracket Assembly with the holes in the front of the skid plate. Using existing bolts, attach Mounting Bracket Assembly to front of skid plate finger tight.
- 2.6 Remove the (2) upper existing nuts and bolts holding the Bumper to the Frame. Insert the Bumper Spacer into each Side of the Bumper such that the two 1/2" holes align with them. Per Fig 2.4.
- 2.7 Align the rear holes of the Mount Braces with the hole in the Frame and Bumper. Using existing bolts and nuts, attach Mount Braces to Frame.
- 2.8 Align Mount Braces with 1/2" holes on the Bumper and the Bumper Spacer. Per Mount Brace, insert two 1/2-13 x 2-1/2" Hex Bolts, two 1/2" x 1.37" O.D. washers (for under the bolt head), and two nuts. Attach to Front Bumper per Fig 2.5 and Fig 2.6.
- 2.9 At this point go back and secure all hardware to Frame and Mounting Bracket Assembly. Torque the bolts as follows: 3/8" bolts to 31 ft.-lbs. and 1/2" bolts to 75 ft.-lbs. Retighten all fasteners after the first two hours of plowing.



Fig 2.1

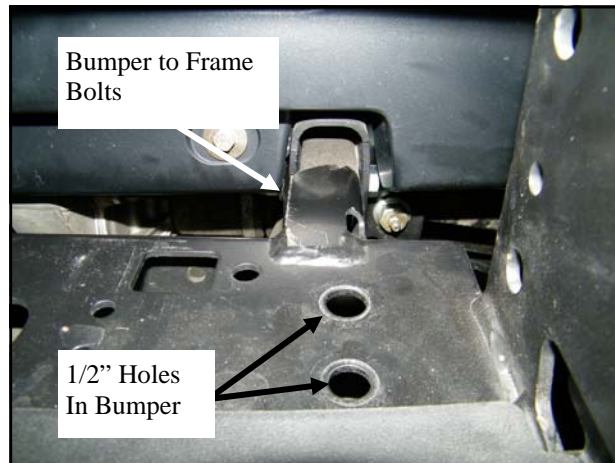


Fig 2.2



Old Skid Plate

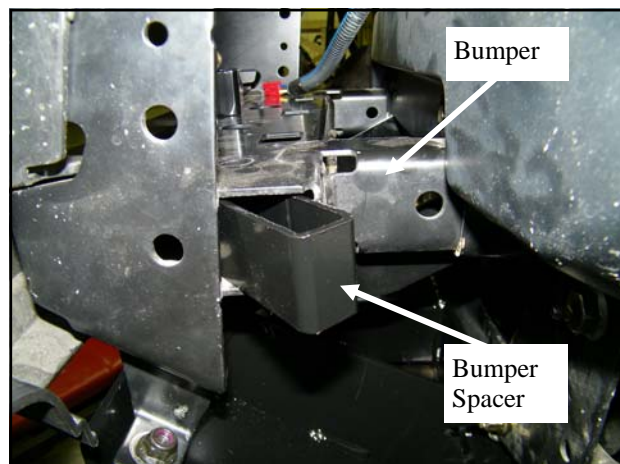
Fig 2.3



Bumper to Frame Bolts

1/2 inch Holes In Bumper

Fig 2.4



Bumper

Bumper Spacer

Fig 2.5



1/2-13 x 2 1/2 Hex Bolts

Fig 2.6



Fig 2.7

3. CONTROL SWITCH & WIRING:

For Utility Vehicle Plow with Self-Contained Hydraulics (p/n's 1UTVP and/or 1UTVP-1)

If using a Utility Vehicle Plow Winch Lift (p/n 1UTVPW), installation is complete. Disregard this section.

- 3.1 From the front of the vehicle, route the 10 ga. Black and Red ring terminal wires, the 16 ga. Black male bullet connector and the 16 ga. Brown ring terminal part of the wiring harness under the vehicle along the frame and back to the battery compartment.
- 3.2 Position the Solenoid near the battery and attach to vehicle frame and drill a 9/32" hole. Slide the 10 ga. Black ground wire ring terminal from the battery wire harness and the main wire harness over the 1/4-20x1" long hex head cap screw and fasten Solenoid and wires to chassis with 1/4-20x1" long hex head cap screw noted above and 1/4-20 hex nut.
- IMPORTANT NOTE:** The 10 ga. black ground wire must have good electrical contact with the vehicle chassis.
- 3.3 Route the Red 10 ga. wire from the Main wire harness to the post on the solenoid as shown in Fig 3.1. Then attach the Red 10 ga. wire from the rear battery wiring harness to the opposite post on the solenoid.
- 3.4 Attach the ring terminal end of the 16 ga. Brown wire onto the smaller stud at the base of the solenoid and tighten with nut supplied.
- 3.5 Route the male bullet terminal end of the 16 ga. black wire to the vehicle wiring harness (this should be a key-controlled connection)
- 3.6 Route the 7-pin Controller plug just under the dash on the driver's side and cable tie to cross tube under the dash for easy access (NOTE: make sure wires do not interfere with operation of pedals).
- 3.7 Route the 7-pin connector of the wiring harnesses up front and to the passenger's side of the vehicle. Secure the 7-pin connector to angle bracket provided with #10 screws and nuts. Locate this bracket to make sure that the 7-pin connector wire harness on the motor will not stretch tight when connected. Secure angle bracket as needed. Then coat inside of the 7-pin connector pins with dielectric grease.
- 3.8 Check the routing of both the front and rear wiring harnesses to be sure they are away from heat sources and moving parts. Secure harnesses in place using cable ties. Close the vehicle hood.
- 3.9 Plug the controller into the 7-pin connector under the dash. Keep the switch turned to the off position until you are ready to use the plow. Turn the controller on with switch on top of unit before use.

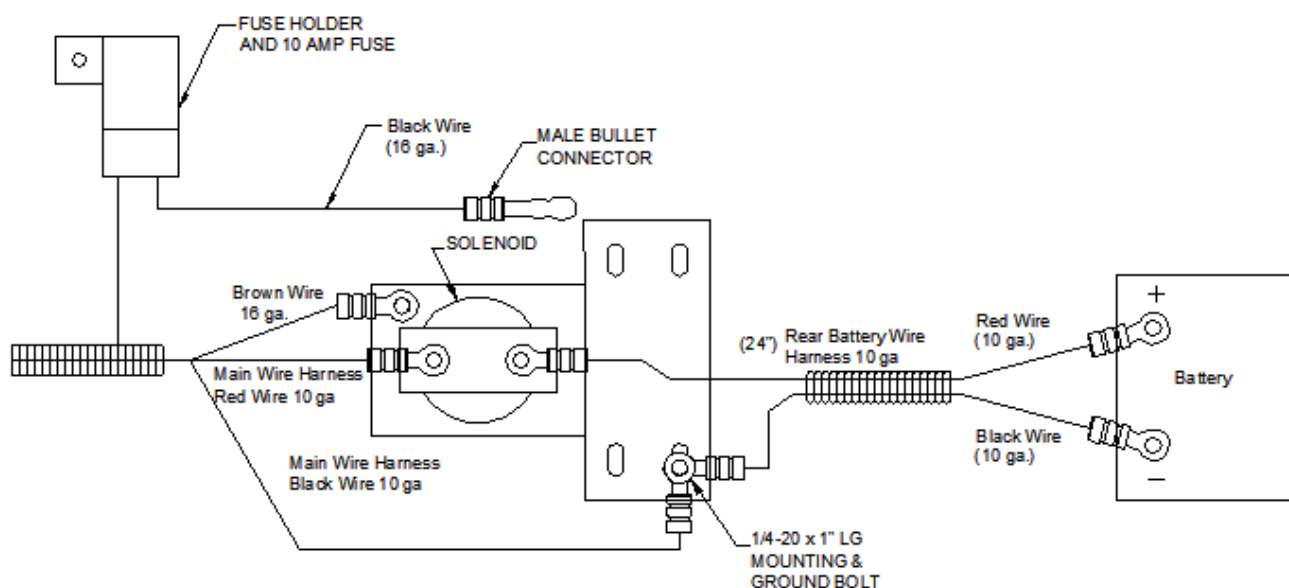
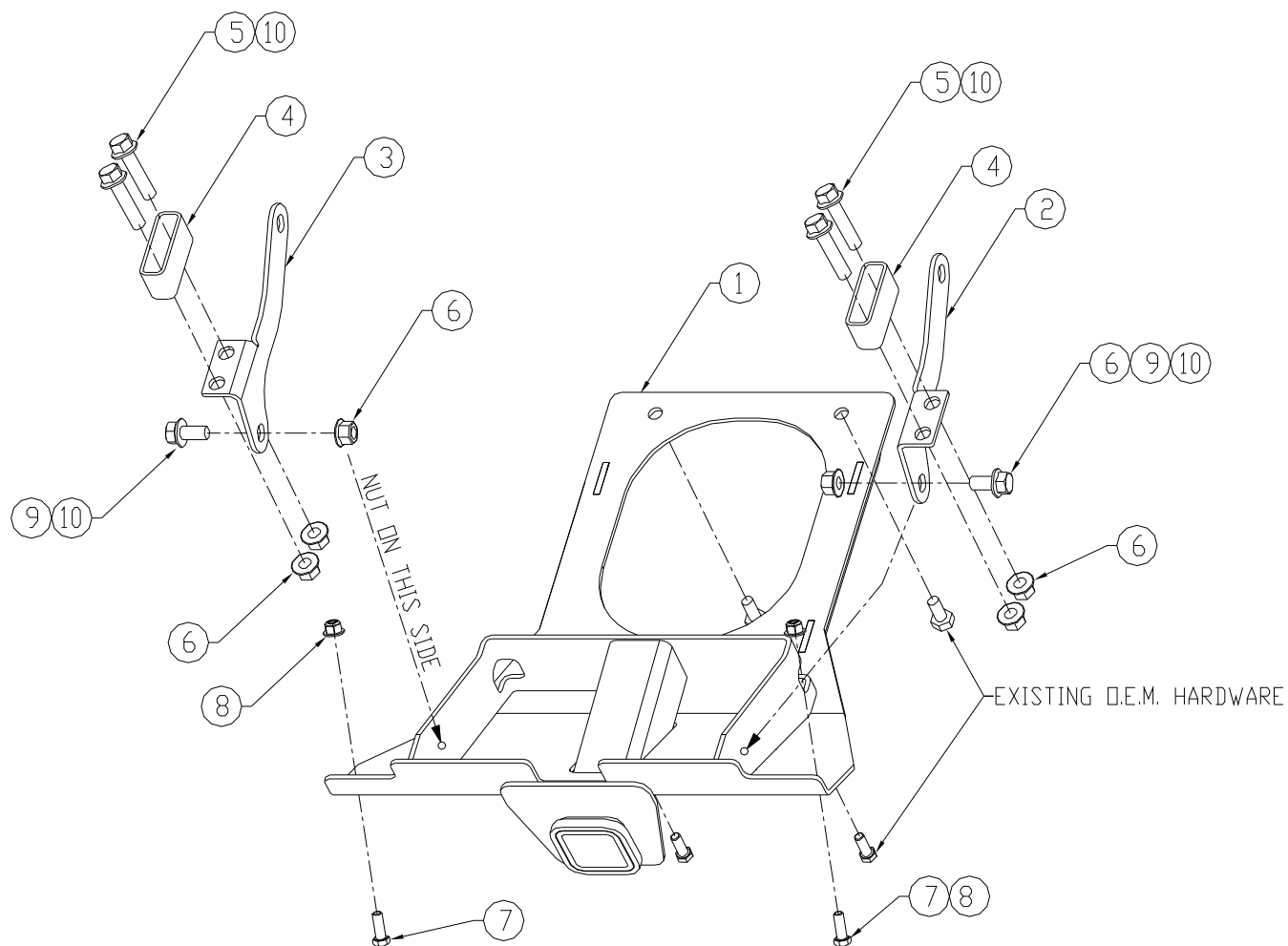


Fig 3.1

John Deere Gator XUV Mount Kit



BALLOON NO.:	QTY.:	P/N:	DESCRIPTION:
1	1	8SV-JDUTPMK	WELDMENT, UNIVERSAL PLOW, JOHN DEERE, MOUNT KIT
2	1	8SV-UTVJDMBL	MOUNT BRACE, LEFT HAND
3	1	8SV-UTVJDMBR	MOUNT BRACE, RIGHT HAND
4	2	N.S.S.	TUBULAR SPACER
-	1	9SV-JDMK-HWK	HARDWARE KIT, JOHN DEERE (CONTENTS LISTED BELOW)
5	4	N.S.S.	1/2-13 x 2-1/2" LONG HEX HEAD BOLT, GRADE 5
6	6	N.S.S.	1/2-13 HEX FLANGED LOCKNUT, GRADE G
7	2	N.S.S.	3/8-16 x 1-1/4" LONG HEX FLANGE BOLT, GRADE 5
8	2	N.S.S.	3/8-16 HEX FLANGED LOCKNUT, GRADE G
9	2	N.S.S.	1/2-13 x 1-1/2" LONG HEX HEAD BOLT, GRADE 8
10	6	N.S.S.	1/2" x 1-3/8" O.D. FLAT STEEL WASHER

N.S.S. = NOT SOLD SEPARATELY